

## a guide to the top 20 pubs

Print out this handy two page guide and take it with you when you visit Jersey. If you have a web-enabled PDA (Palm Pilots etc.) you can download this information at [www.aboutjersey.net/pda/](http://www.aboutjersey.net/pda/)

*Pubs are listed in alphabetical order.*

### BAR 10 RESTAURANT & CELLAR BAR

10 Bond Street, St. Helier Tel: 519650

Recently re-furbished centrally situated restaurant and bar, serving excellent bistro food in a relaxed atmosphere. Full a la carte menu – also set lunch menu. Basement bar open for drinks and coffee and bar food menu. Closed Sundays.

### BLUES

28 Halkett Place, St. Helier Tel: 789113

Modern, bright bar/restaurant in the centre of town.

### COCK & BOTTLE

Royal Square, St. Helier Tel: 722184

Located in the Royal Square with outdoor seating and a granite fire place inside.

### THE LANDMARK

La Marquanderie Hill, St. Brelade Tel: 741177

A popular family venue with large landscaped garden and kids activities within walking distance of St. Brelade's Bay.

### LE HOCQ INN

Grand Route de la Côte, St. Clement Tel: 854924

A popular coastal pub and restaurant about 5 minutes taxi from town

### LE MOULIN DE LECQ

Grève de Lecq, St. Ouen Tel: 482818

Family pub with large outdoor area and gardens. Outdoor BBQ during the Summer months.

### LES FONTAINES TAVERN

Route du Nord, St. John Tel: 862707

15th Century pub frequented by locals on the north of the Island. Welcoming atmosphere.

### LIDO'S WINE BAR

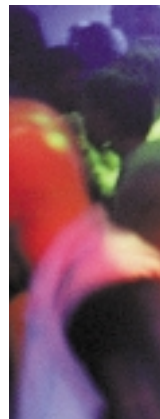
4-6 Market Street, St. Helier Tel: 722358

Popular wine bar in the centre of town serving good food at lunchtime with outdoor seating. Closed Bank Holidays.

### OLD COURT HOUSE INN

St. Aubin's Harbour, St. Brelade Tel: 746433

Drink outdoors looking across the road at the boats moored in the harbour when the weather is fine or inside this 17th Century inn with lunch and dinner **seven** days a week.



## a guide to the top 20 pubs

*Continued from previous page.*

### OLD PORTELET INN

Portelet Bay, St. Brelade Tel: 741899

Built in the 17th Century this this huge pub boasts three bars and indoor/outdoor kids play area.

### THE OLD SMUGGLER'S INN

Ouaisnè, St. Brelade Tel: 741510

17th Century converted fishermen's cottages with regular guest beers.

### THE ORIGINAL WINE BAR

86 Bath Street, St. Helier Tel: 871119

Friendly town centre bar with sofas, armchairs and music. Stocking more than forty different wines, champagne, real ales, imported beers and the house speciality-flavoured vodka.

### THE PEIRSON

Royal Square, St. Helier Tel: 722726

Situated in the Royal Square, offering traditional pub food. Outdoor seating. Closed Sunday.

### PEMBROKE HOTEL

La Grande Route des Sablons, Grouville Tel: 855756

Large traditional pub near Grouville golf course.

### ROZEL BAY INN

Rozel, St. Martin Tel: 863438

Alan Whickers favourite place on earth. Enough said.

### ROYAL ST. MARTIN

Grande Route de Faldouet, St. Martin Tel: 856289

Large family pub and restaurant situated in the rural north east of the Island. Popular with both locals and visitors. Good Sunday lunch served upstairs in the winter.

### STAR & TIPSY TOAD

St. Peter's Village, St. Peter Tel: 485556

Jersey's only brew pub – large bar area with plenty of seating. No food on Sundays.

### TENBY BARS

The Bulwarks, St. Aubin, St. Brelade Tel: 741224

Popular harbour front pub. Good pub menu.

### TIPSY TOAD TOWN HOUSE

57 New Street, St. Helier Tel: 615000

Large bar, centrally located with excellent pub food.

Popular with locals on Friday and Saturday nights.

### TRINITY ARMS

La Rue ès Picots, Trinity Tel: 864691

Country pub serving traditional food. Kids welcome.

No food served weekday evenings (during winter).

